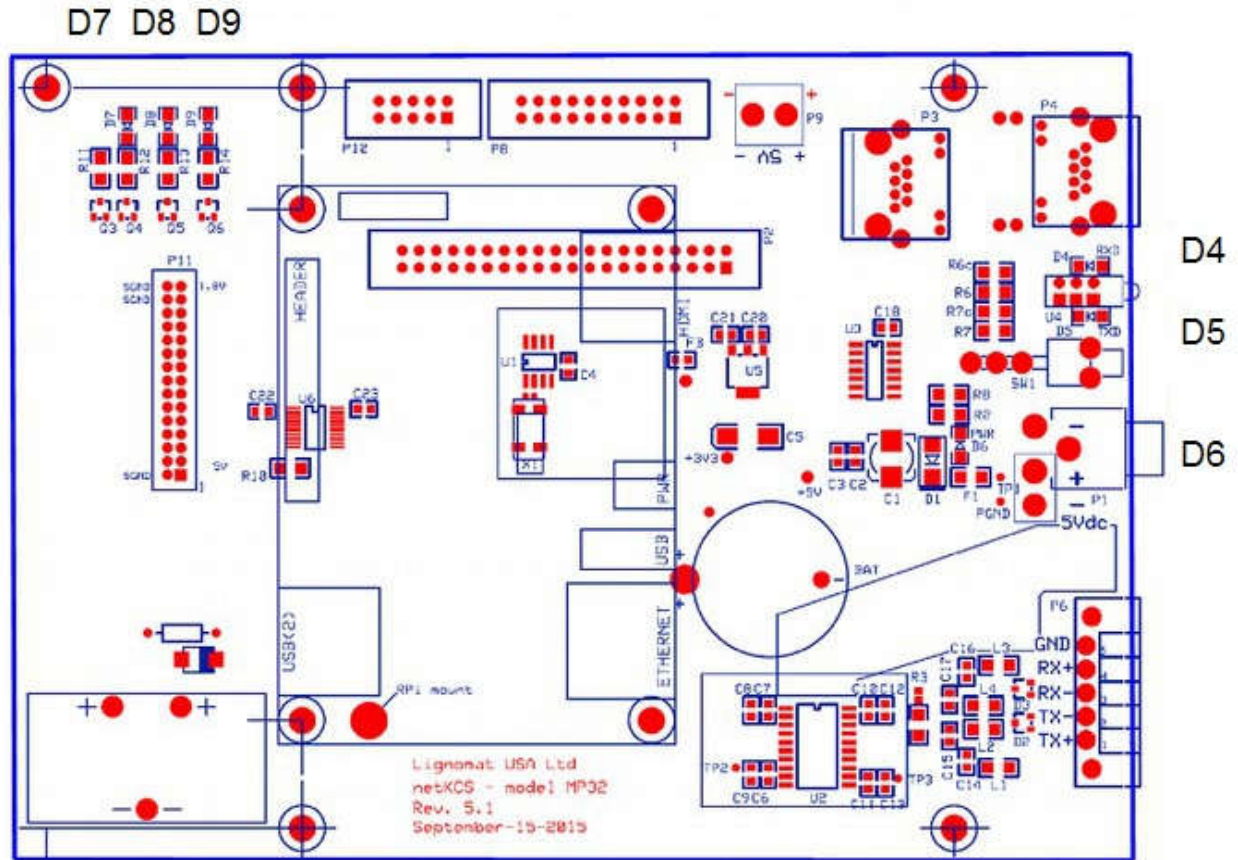


## HARDWARE INSIDES

### MP32 Main Board Indicators



#### D7: Controller Status

Not ready, when this (red) LED is on the CPU board is not yet fully booted – Please wait.

- On – Not ready, during boot sequence and when communications is disabled. When this (red) LED is on the CPU board is not yet fully booted – Please wait.
- Off – Ready, once Operating system is booted the LED should be off.

#### D8: Controller (KCP program) heart beat

- Off during boot,
- Blinking (slow about 3-5 seconds per minute This is normal operation and the on cycle should correspond to blinking on the Tx, and Rx lights near the switch near the right hand side of the board

#### D9: Reset LED

- Off during boot,
- Normally on  
When a reset request has been identified this light will be off until the reset has completed.

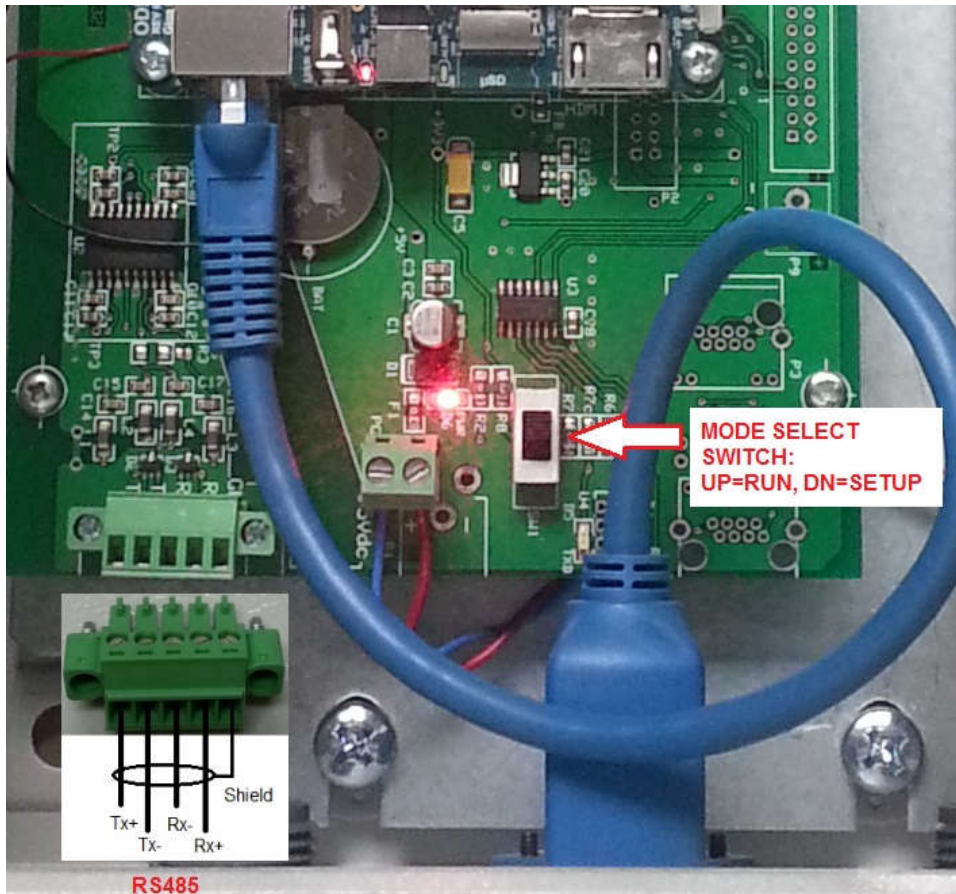
D4, D5: Main Data communication indicators

Tx, and Rx lights are normally off except when communicating with the kilns.

- Blinking intermittently (about once a minute quick flashes of both LED's). This is normal operation and is an indication that we are able to communicate with kilns.
- Off for more than 3 minutes – could be an issue with the RS485 communication with kilns. Check cable connections, wiring and kiln controllers.

D6: power LED (red)

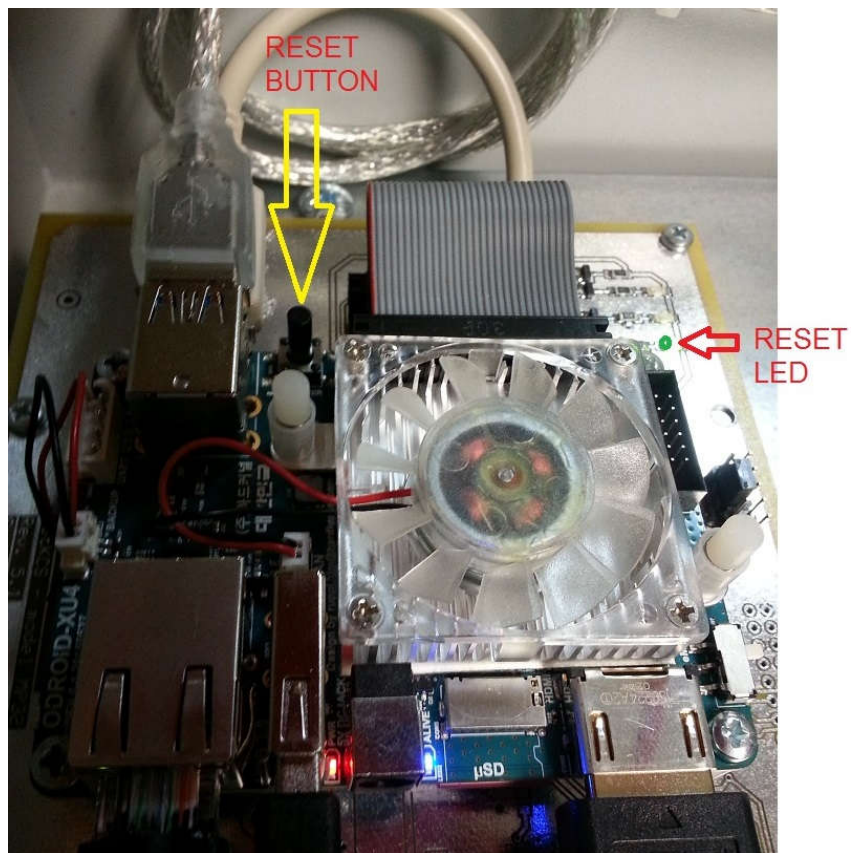
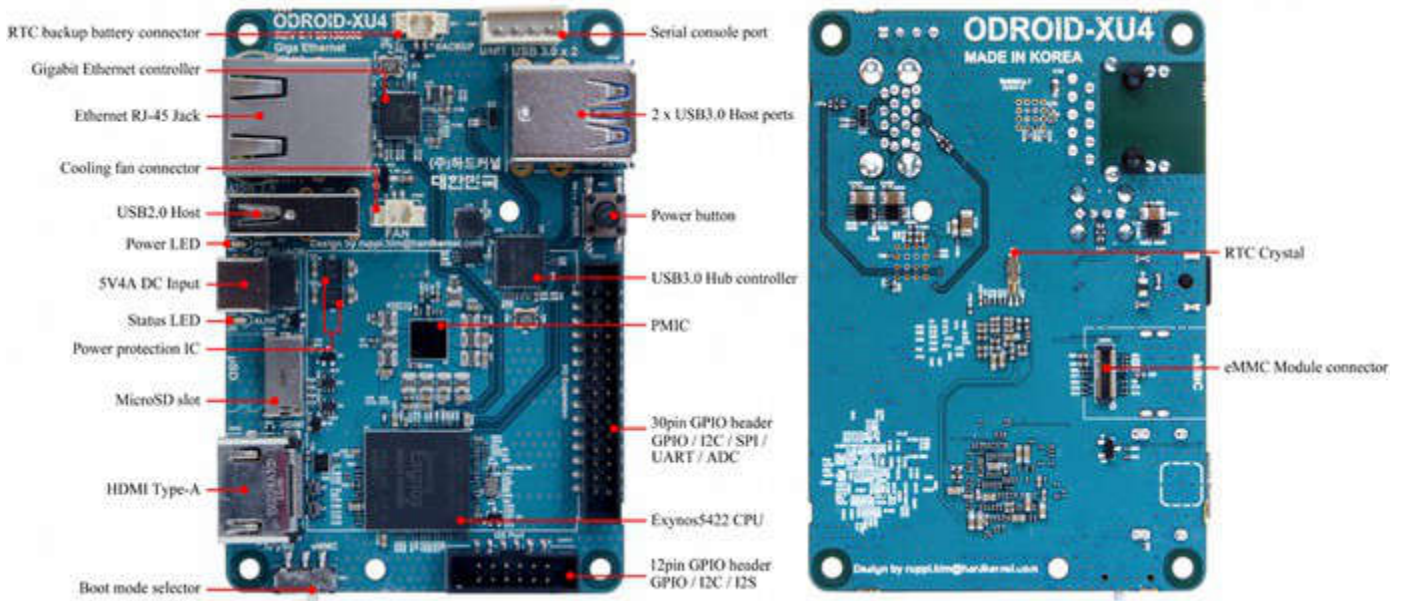
- On, unless system is not receiving power from AC outlet



**RS485  
MAIN DATA  
CONNECTOR**

Cable to KCU/KCM/PCM  
kiln controllers

CPU board should have a Status LED (blue) that is blinking and a red LED that is on solid. Additionally the LED's on the Network connector should also be either on or blinking



Screen :

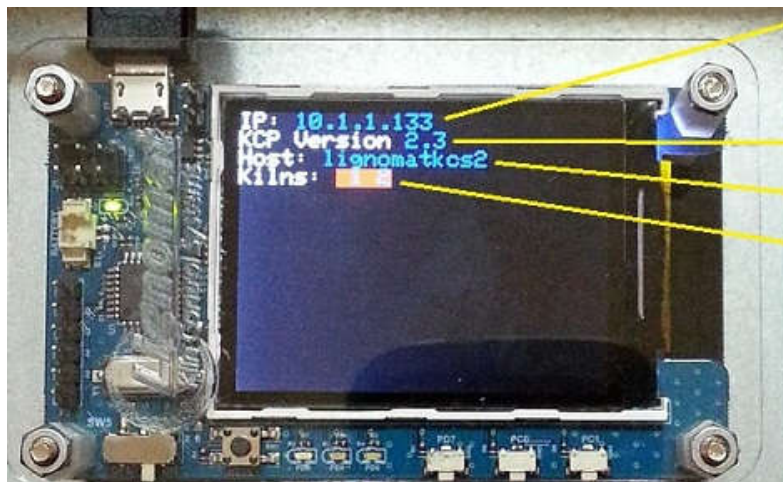
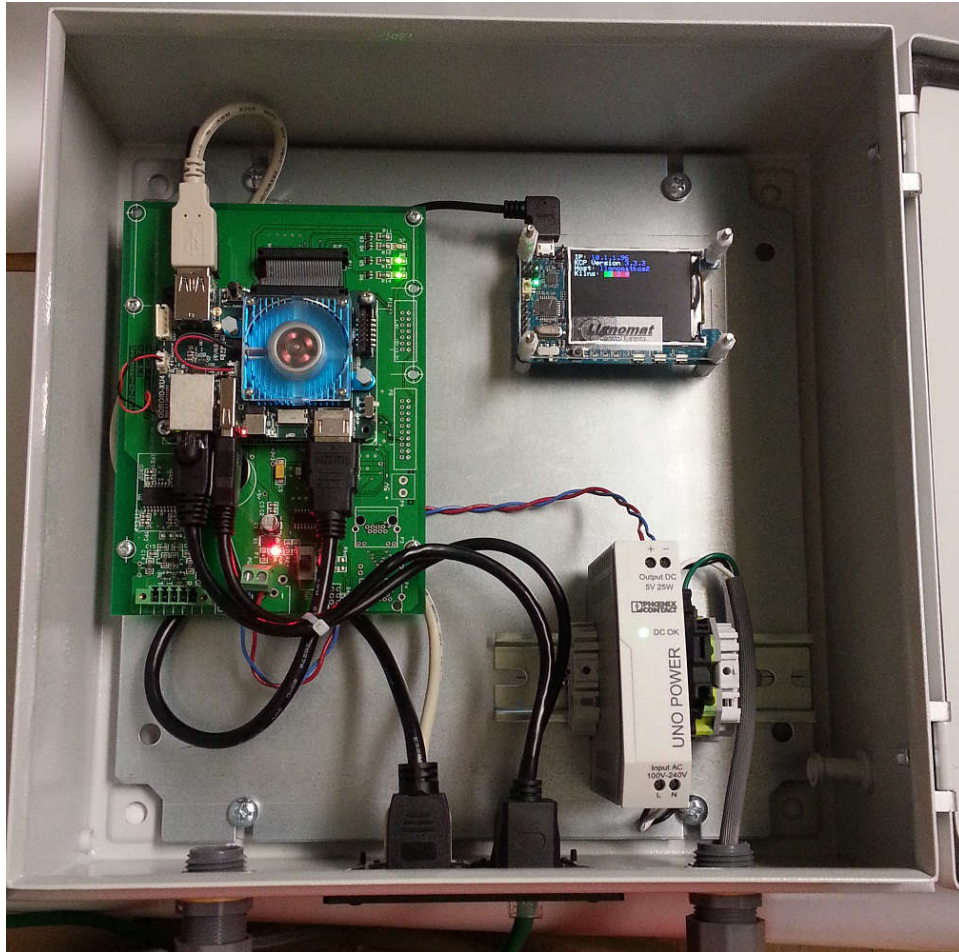
Running:

While running the screen will be periodically updated with the IP address, the hostname, Kilns, and status.

Reboot/startup:

Blank, during reboot if the screen had data on it previously it will not update until the software has completely rebooted it may be up to 2 minutes to update after a reboot.

Indicator LEDs will show reboot status until the system is up and running again.



IP address

KCP software version

Host name

Kiln numbers